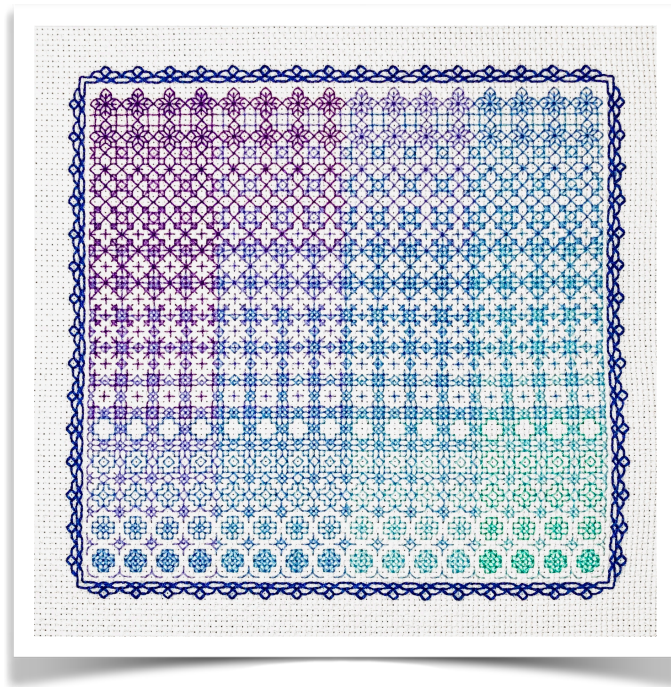


Transitions Blackwork Sampler

Cross-stitch chart by LooseThreadStitchery

2023



Seven shades of embroidery floss fade into one another to create a pretty gradient in blackwork. Chart measures 110 stitches wide by 100 stitches high; stitched area is 104 x 98 stitches.

<http://www.etsy.com/shop/LooseThreadStitchery>









Instagram: @loosethreadstitchery

© 2023

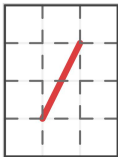
Page 1 of 7

Notes

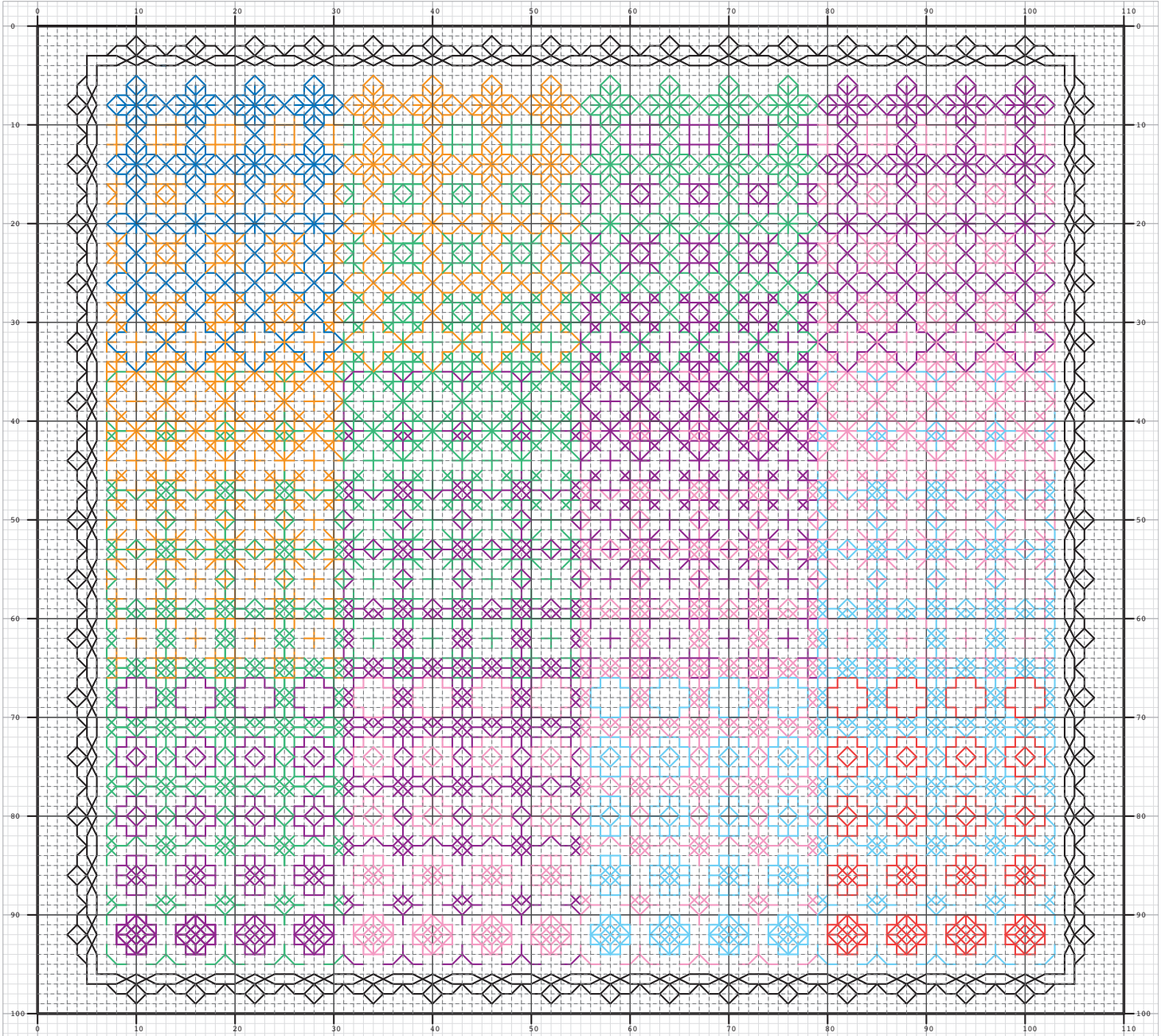
The fill pattern is back-stitched using a single strand of embroidery floss. Border is back-stitched using a double strand of embroidery floss. The model is shown on 14-count Aida cloth and uses the following colours of DMC thread:

Back-stitch (single strand)	Back-stitch (double strand)
 DMC 3837	 DMC 797
 DMC 208	
 DMC 340	
 DMC 799	
 DMC 813	
 DMC 3766	
 DMC 959	

The following is worked as a single long stitch:



Full Chart



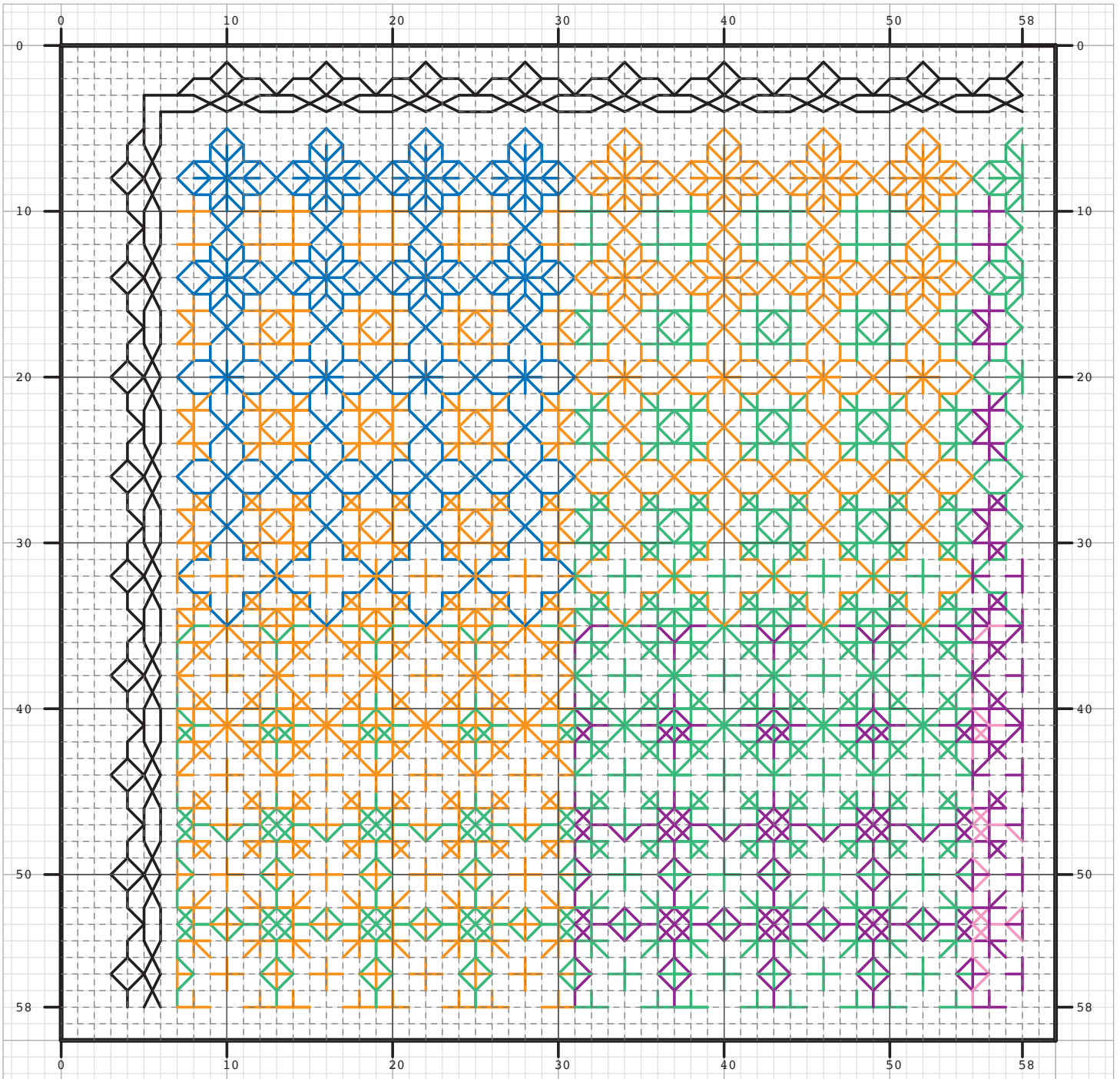
<http://www.etsy.com/shop/LooseThreadStitchery>

Instagram: @loosethreadstitchery

© 2023

Page 3 of 7

Section 1, Upper Left (Columns 0-58; Rows 0-58)



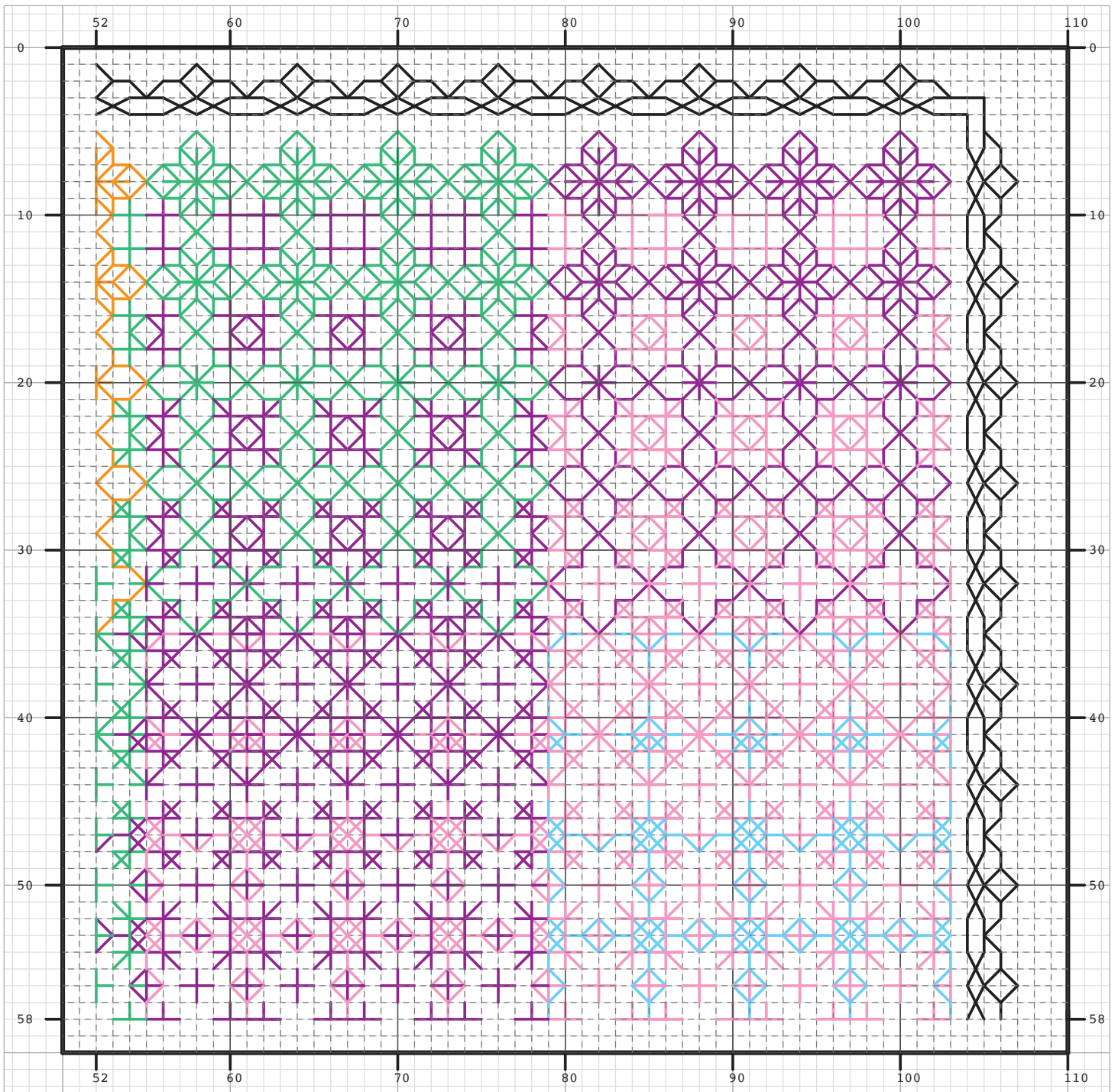
<http://www.etsy.com/shop/LooseThreadStitchery>

Instagram: @loosethreadstitchery

© 2023

Page 4 of 7

Section 2, Upper Right (Columns 52-110; Rows 0-58)



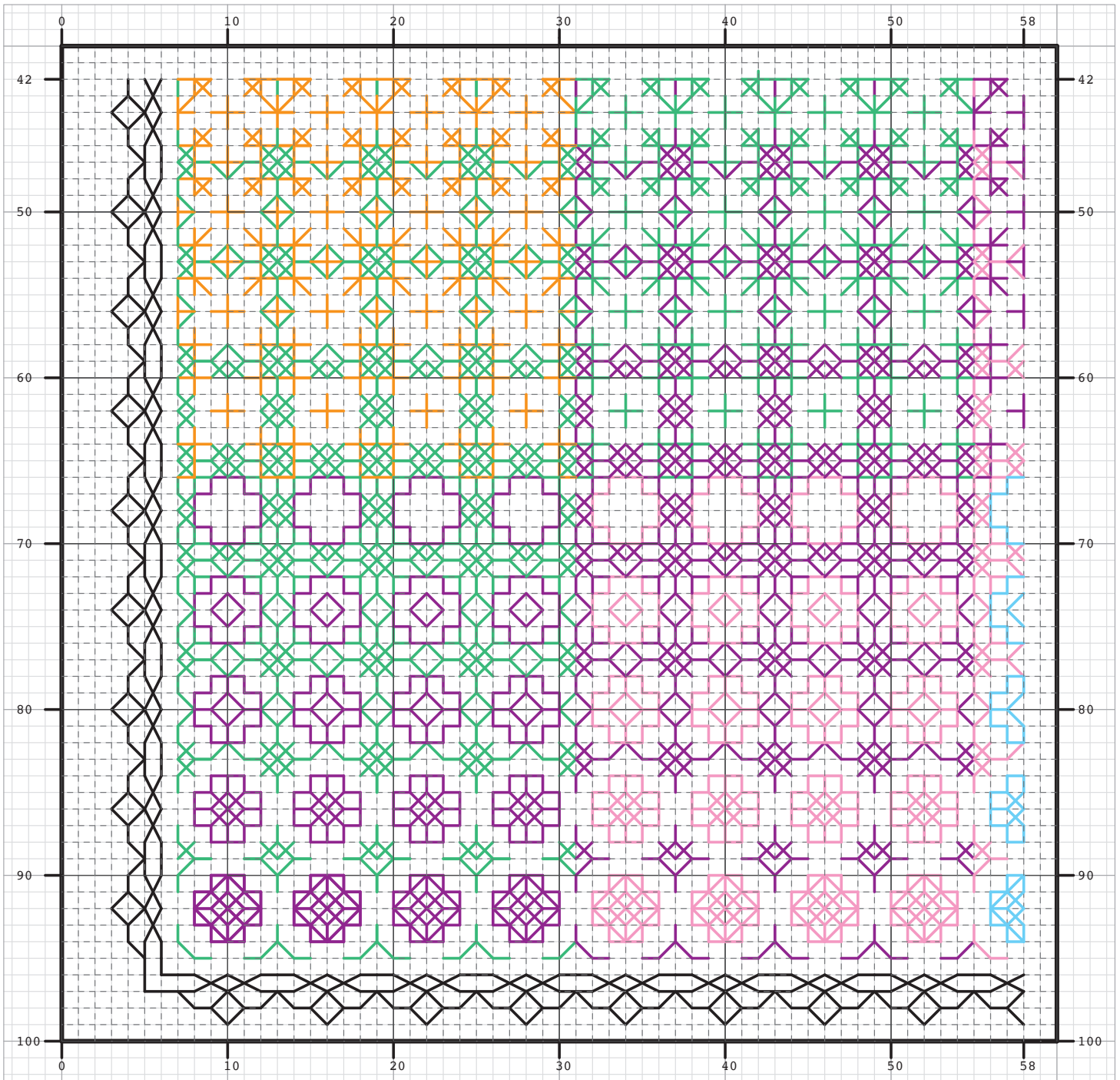
<http://www.etsy.com/shop/LooseThreadStitchery>

Instagram: @loosethreadstitchery

© 2023

Page 5 of 7

Section 3, Lower Left (Columns 0-58; Rows 42-100)



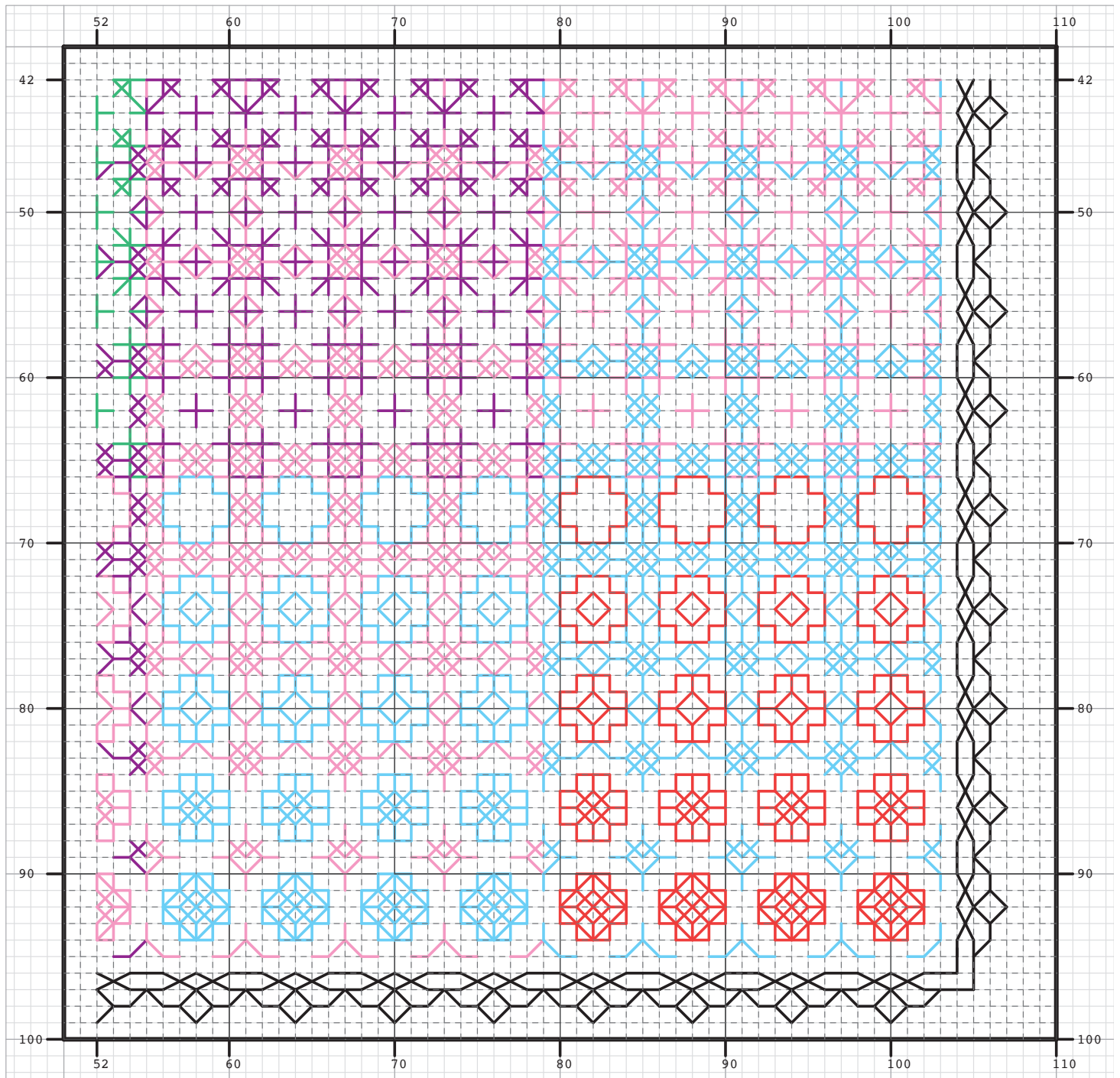
<http://www.etsy.com/shop/LooseThreadStitchery>

Instagram: @loosethreadstitchery

© 2023

Page 6 of 7

Section 4, Lower Right (Columns 52-110; Rows 42-100)



<http://www.etsy.com/shop/LooseThreadStitchery>

Instagram: @loosethreadstitchery

© 2023

Page 7 of 7